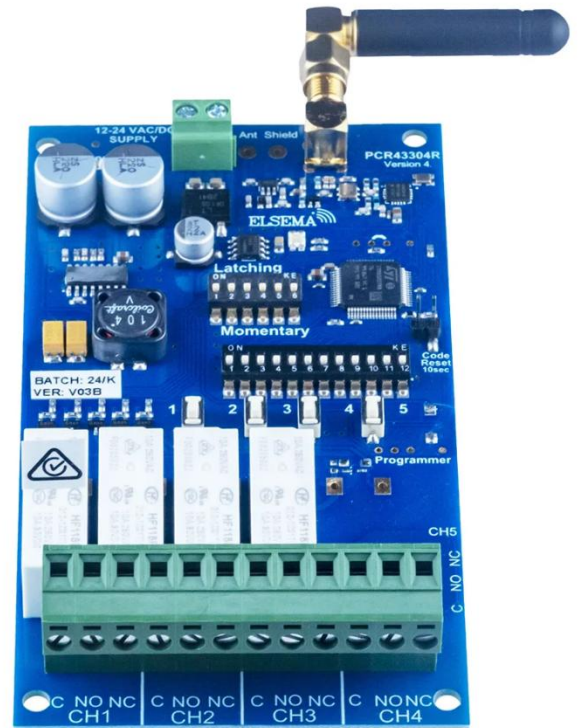


# How to add new remotes

Installation manual – AlphaGate

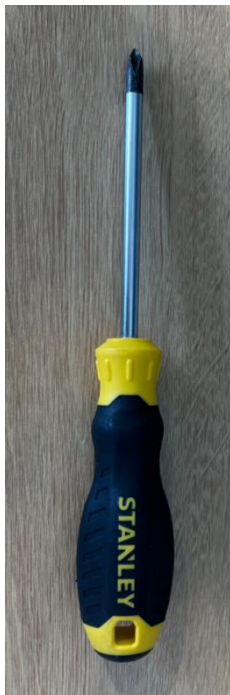


## 1. Add new remotes - AlphaGate

- Locate the AlphaGates. When standing in front of the gates as if you were going to walk through, the receiver is in the bottom of the right-hand side gate.



- Remove the cover by loosening two screws. PH2 screwdriver will be needed.

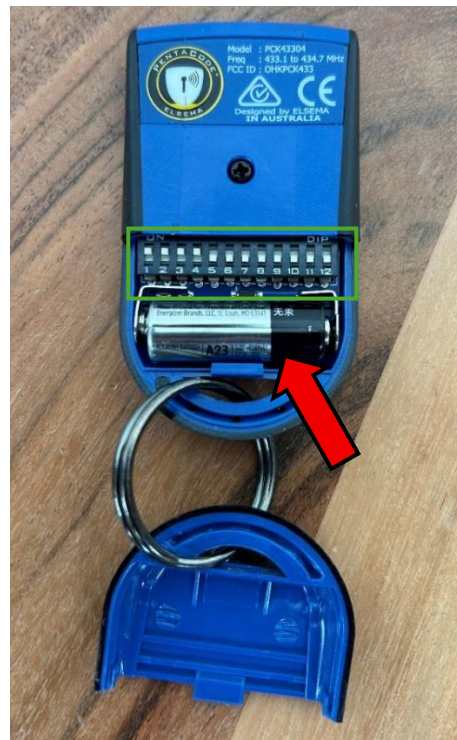


**NOTE:** The gate is powered with 230V. Make sure that the power has been turned off before removing the cover. If that isn't possible, make sure that you don't touch anything inside the gate when the cover has been removed.

- The receiver will be placed as in below picture. Check which DIP-switches that are on.



- Remove the cover on the back side of the remote. Push it in the direction as the arrows are pointing in. Set DIP-switches 1-10 in the remote exactly as in the receiver. DIP-switches 11/12 should always be OFF/OFF. Lastly, insert the battery and test the functions.



- Finally:
  - Put the cover back on, on the remote.
  - Put the cover back on, on the gate.
  - Lock the cover on the gate by putting back the two screws.

## 2. Change battery on existing remote

- Remove the cover on the back side of the remote. Push it in the direction as the arrows are pointing in. Remove existing battery. Add a new battery, model A23. Test the functions before putting back the cover.

